

District of Columbia

ANSI ASC X12N 276/277 (Version 5010A)
Health Care Claim Status Request/Response



DC MMIS Companion
Guide
Version 2.0

January 2024

© 2017 Conduent, Inc. All rights reserved. Conduent and Conduent Agile Star are trademarks of Conduent, Inc. and/or its subsidiaries in the United States and/or other countries.

Other company trademarks are also acknowledged.

Document Version: 2.0 (January 2024)

Review and Revision History

Version #	Date	Description	Author
V 1.00	02/19/2020	Creation of Document	Conduent
V 2.00	01/19/2024	Updated URLs, branding, and format/content order to align with the CAQH CORE Master Companion Guide Template and Conduent standard	Conduent

Configuration of this Document

This document is under full configuration management. See the *Configuration Management Plan* for owner and rules.

Confidentiality Statement

This document is produced for Conduent State Healthcare, LLC District of Columbia (DC) Medicaid Management Information System (MMIS) Design, Development, Consolidated (DDI) management and cannot be reproduced or distributed to any third party without prior written consent.

No part of this document may be modified, deleted, or expanded by any process or means without prior written permission from Conduent State Healthcare.

Preface

This Companion Guide to the Version 5010 ASC X12N Implementation Guides and associated errata adopted under HIPAA clarifies and specifies the data content when exchanging electronically with Conduent EDI Solutions. Transmissions based on this companion guide, used in tandem with the Version 5010 ANSI ASC X12N Implementation Guides, are compliant with both X12 syntax and those guides. This Companion Guide is intended to convey information that is within the framework of the ASC X12N Implementation Guides adopted for use under HIPAA. The Companion Guide is not intended to convey information that in any way exceeds the requirements or usages of data expressed in the Implementation Guides.

Table of Contents

1	Introduction	1
	Scope	1
	Overview.....	1
	References	1
	Additional Information	2
2	Getting Started	3
	Working with District of Columbia Medicaid	3
	Trading Partner Registration	3
	Certification and Testing Overview	3
3	Testing with the Payer	4
	Trading Partner Testing Procedures.....	4
	CommerceDesk Online –Testing Application	4
4	Connectivity with the Payer(s)/Communications	5
	Process Flows	5
	Transmission Administrative Procedures	6
	Re-Transmission Procedures	6
	Communication Protocol Specifications.....	6
	Asynchronous Dial-Up	6
	Web Portal.....	9
	MoveIt DMZ	12
	MOVEit-Compatible FTP Applications	13
	Data Retrieval	14
	Error Reports	14
	Web Portal.....	15
	Site Access.....	15
	MoveIt DMZ	17
	MOVEit-Compatible FTP Applications	18
	Passwords	19
	Password General Standards.....	19
5	Contact Information	20
	EDI Customer Service/Technical Assistance	20
	Transmission Telephone Number.....	20
	Tracking Transmission/Production Problems.....	20
	Provider Service Number	20
	Applicable Websites	20
6	Control Segments/Envelopes	21

ISA-IEA.....	21
GS-GE.....	21
ST-SE.....	22
7 Payer Specific Business Rules and Limitations.....	23
8 Acknowledgements and/or Reports	24
Report Inventory	24
Interchange Level Errors and TA1 Rejection Report.....	24
Transaction Set Level Syntax Results and 999 Rejection Report.....	25
9 Trading Partner Agreements.....	26
Trading Partners	26
10 Transaction-Specific Information (Version 5010)	27
Data Clarifications.....	27
276 Claim Status Request.....	27
277 Claim Status Response	28
11 Appendices	30
Implementation Checklist	30
Business Scenarios.....	30
Transmission Examples	30
Frequently Asked Questions.....	30
Change Summary	31
Companion Guide Documentation Change Control	31

Table of Figures

Figure 1: Editing and Validation Flow Diagram.....	5
Figure 2: Home Page Image.....	9
Figure 3: Upload Files Image.....	10
Figure 4: File Submission Image.....	11
Figure 5: Confirmation Screen Image.....	12
Figure 6: Home Page Image.....	15
Figure 7: Download Files Image.....	16
Figure 8: Retrieve Files Image.....	17

Table of Figures

Table 1: Teleprocessing Requirements.....	7
Table 2: Teleprocessing Settings.....	7
Table 3: Transmission Procedures.....	7
Table 4: MOVEit-Compatible FTP Applications (Submission).....	13
Table 5: MOVEit-Compatible FTP Applications (Retrieval).....	18
Table 6: ISA-IEA Segment.....	21
Table 7: GS-GE Segment.....	21
Table 8: ST-SE Segment.....	22
Table 9: 276 Claim Status Request.....	27
Table 10: 277 Claim Status Response.....	28
Table 11: Change Control Table.....	31

1 Introduction

Conduent EDI Solutions, a leader in healthcare technology, provides EDI gateway services to providers enrolled in contracted healthcare plans. This guide outlines the procedures necessary for engaging in Electronic Data Interchange (EDI) with Conduent EDI Solutions and supplies specific data clarifications where applicable.

Our electronic transaction services provide the following functionalities:

- Easily submit all your transactions to one source
- Submit transactions twenty-four hours a day, seven days a week
- Receive confirmation of receipt of each file transferred

Healthcare plans that participate with Conduent EDI Solutions are referred to as payers. Transactions are accepted electronically into our data center and are processed through the Conduent State Healthcare Clearinghouse (SHCH).

The Conduent SHCH provides connectivity for the flow of electronic health care transactions between medical providers, billing services, vendors, other clearinghouses, and the District of Columbia MMIS (DC MMIS) system. Additionally, Conduent SHCH provides translation to and from ANSI ASC X12N standard formats.

Scope

This companion guide is intended for use by DC Medicaid Trading Partners for the submission of the X12N 276 transactions to the Conduent SHCH through Conduent EDI Solutions for processing and the return of X12N 277 transactions to submitters. The companion guide contains data clarifications derived from specific business rules that apply exclusively to claims processing for DC Medicaid. This companion guide is subject to change.

The ANSI ASC X12N 276 transaction, requesting claim status information, is submitted to the Conduent SHCH for processing. Conduent SHCH validates submission of ANSI X12N format(s). If the file contains syntactical error(s), the segment(s) and elements(s) where the error(s) occurred will be reported in a 999 Functional Acknowledgement. The TA1 report is used to report receipt of individual interchange envelopes that contain corrupt data or an invalid trading partner relationship. The Conduent SHCH will then return 277 transactions containing claim status information or any AAA segments.

Overview

This document provides the following information for DC Medicaid Trading Partners:

- Testing expectations
- Connectivity methods for transaction transmission and associated security standards
- DC Medicaid data requirements
- Additional service offerings
- Details on responses/acknowledgements
- X12 transaction data clarifications

References

This Companion Guide is intended for trading partner use in conjunction with the ANSI ASC X12N National Consolidated Guides (TR3), as adopted under HIPAA. These are available at: <https://x12.org/products/technical-reports>.

Additional Information

The companion guide outlines the procedures necessary for engaging in Electronic Data Interchange (EDI) with Conduent EDI and specifies data clarification where applicable.

Insurance companies and health plans that participate with Conduent EDI are referred to as payers, DC Medicaid being one of the payers. Transactions are accepted electronically into our data center in East Windsor, NJ, and are processed through the Conduent EDI clearinghouse. As a Conduent EDI clearinghouse service, we provide connectivity to various health plans and states where Conduent EDI is the fiscal agent, third-party administrator, or contracted clearinghouse.

2 Getting Started

Working with District of Columbia Medicaid

Any entity sending electronic transmissions to Conduent EDI Solutions for processing where reports and responses will be delivered must complete an EDI enrollment package. This package provides Conduent EDI Solutions the information necessary to assign a Logon Name, Logon ID, and Trading Partner ID, which are required to submit electronic transmissions.

Trading Partner Registration

You may obtain an enrollment package by contacting the Conduent EDI Support Unit or by downloading it from our website at: <http://edisolutionsmmis.portal.conduent.com/gcro/>

Certification and Testing Overview

Conduent EDI Solutions does not require certification of submitters and their transactions, but we do require some minimal transaction testing.

Completion of the testing process must occur prior to electronic submission of production data to Conduent EDI Solutions. Assistance from Conduent EDI Business Analysts is available throughout this process. Each test transmission is inspected thoroughly to ensure no format errors are present. Testing is conducted to verify the integrity of the format, not the integrity of the data; however, to simulate a production environment, we request that you send real transmission data. The number of test transmissions required depends on the number of format errors on a transmission and the relative severity of these errors. Additional testing may be required in the future to verify any changes made to Conduent's system. Also, changes to the X12N formats may require additional testing.

3 Testing with the Payer

Trading Partner Testing Procedures

- Conduent EDI Solutions provides companion guides and enrollment packages for download via the web at: <https://edisolutionsmmis.portal.conduent.com/gcro/>, then choose the applicable item from the menu on the left.
- The Trading Partner completes and submits enrollment package to Conduent EDI Solutions.
- The Trading Partner is assigned Logon Name and Logon User ID.
- The Trading Partner contacts the Conduent EDI Business Analyst department at 1(866) 407-2005 to arrange a testing schedule and complete their EDIFECs enrollment.
- The Trading Partner has access to the EDIFECs website in order to submit X12N test files for analysis. Each test file is analyzed based on the seven levels of testing defined by WEDI SNIP. At this time, the submitter is required to address any errors discovered by EDIFECs during the compliance analysis prior to moving on to the next stage of testing with Conduent EDI Solutions.
- The Trading Partner executes test cases and data is sent to Conduent EDI Solutions.
- The Business Analyst evaluates flow of test data through the Conduent SHCH.
- If test cases are completed successfully, the Business Analyst contacts the Trading Partner to advise Trading Partner that they are approved for placement into the production environment when available. If the testing entity is a software vendor, they will be required to provide a list of submitters using the approved software package.
- If test cases are unsuccessful, the Business Analyst will contact the Trading Partner. The Trading Partner will remain in the testing environment until test cases are completed successfully.

CommerceDesk Online –Testing Application

CommerceDesk Online is an online HIPAA testing application available to the District of Columbia. CommerceDesk Online offers the following types of testing against the base HIPAA Consolidated guidelines for free.

- **Test all 7 WEDI/SNIP Types.** CommerceDesk Online provides all 7 Types of WEDI/SNIP Testing for HIPAA, including integrity testing, requirement testing, balancing testing, situational testing, code set testing, product or services testing, and guide-specific testing.
- **Test the HIPAA Code Sets.** Validate over 40 industry code tables and databases.
- **Get your Answers Fast.** With CommerceDesk Online, the results of your free compliance testing are typically available within seconds for small files and within minutes for files up to 10 megabytes and larger.

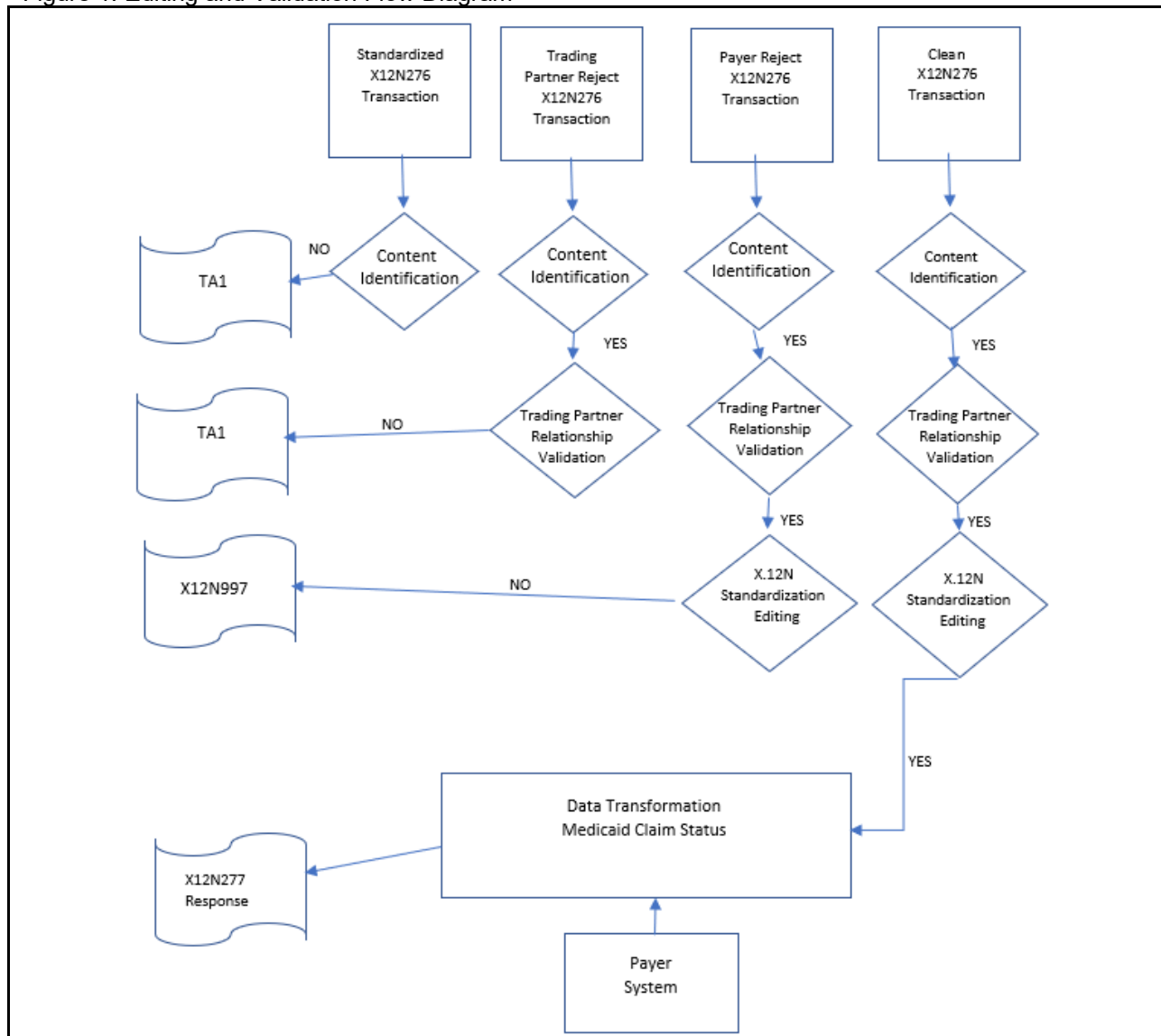
The Conduent Washington DC Medicaid Community on the CommerceDesk Online application can be accessed at: <https://sites.edifecs.com/?conduent>. All submitters will contact the Conduent Client Integration Testing Support Unit to enroll. Once enrolled, submitters will test claims submissions through the CommerceDesk Online utility and will receive a file status report. Once these files test with no errors, a submitter may then submit test claims submissions to Conduent SHCH for Client Integration testing.

4 Connectivity with the Payer(s)/Communications

This section describes the process to submit HIPAA X12N 276 transactions along with various submission methods, security requirements, and exception handling procedures.

Process Flows

Figure 1: Editing and Validation Flow Diagram



LEGEND:

- Content Identification:** Data identification is attempted. If the data is corrupt or intended for another resource, a TA1 (Interchange Acknowledgement) will be returned. If the data can be identified, it is then checked for Trading Partner Relationship Validation.
- Trading Partner Relationship Validation:** The trading partner information is validated. If the trading partner information is invalid, a TA1 (Interchange Acknowledgement) will be returned to the submitter. If the trading partner relationship is valid, the data will pass for X12N syntax validation.
- X12N Syntax Validation:** A determination will be made as to whether the data is ANSI ASC X12N. A 999 (Functional Acknowledgement) will be returned to the submitter. The 999 contains **ACCEPT** or **REJECT** information. If the file contained syntactical errors, the segment(s) and element(s) where the error(s) occurred will be reported. If the data passes X12N syntax validation, data transformation will be performed.
- Data Transformation:** The data is transformed and processed through the Payer and EDI. An ANSI ASC X12N 277 will be returned for submitter pickup.

Transmission Administrative Procedures

This section describes the available transmission modes to Conduent EDI Solutions.

Providers will have an option to select an appropriate transmission mode. Providers may also opt for two different modes of receipt and delivery. This means that the provider may submit transactions in one transmission mode and receive the return transactions via an alternate mode. Please note that some modes of transmission have additional costs that are the responsibility of the external Trading Partner.

Re-Transmission Procedures

Please contact the [EDI Solutions Helpdesk](#) regarding re-transmission procedures.

Communication Protocol Specifications

We offer the following transmission methods for Trading Partners:

- EDI Direct
- FTPs or sFTP
- MOVEit DMZ
- WINASAP5010 (*select payers)

Transaction transmission is available twenty-four hours a day, seven days a week. This availability is subject to scheduled and unscheduled maintenance downtime. It is operational policy to schedule preventative maintenance periods on weekends whenever possible.

Asynchronous Dial-Up

Conduent EDI Solutions provides an interactive, menu-driven bulletin board system that allows you to upload your transaction files and receive immediate confirmation of the status of your transfer. This bulletin board system (BBS) can be accessed using a standard modem and supports modem speeds of up to 56,000 bps. Transaction transmission is available twenty-four hours a day, seven days a week. This availability is subject to scheduled and unscheduled host downtime. It is operational policy to schedule preventative maintenance periods on weekends whenever possible.

[Hardware Requirements](#)

Hayes-compatible 2400-56K BPS asynchronous modem.

[Software Requirements](#)

PKZIP or WINZIP

XMODEM, YMODEM, ZMODEM, or Kermit

[Communication Protocols](#)

Conduent currently supports the following communication options:

XMODEM, YMODEM, ZMODEM, and Kermit

Teleprocessing Requirements

The general specifications for communication with Conduent are shown below.

Table 1: Teleprocessing Requirements

Telecommunications	Hayes-compatible 2400-56K BPS asynchronous modem.
File Format	ASCII text data.
File Name for Zipped Files	All zipped files must follow a standard 8.3 naming convention 'XXXXXXXX.YYY', where 'X' represents an 8-digit alphanumeric value only and 'Y' represents the 3-digit file extension. Examples of acceptable file extension are (txt, doc etc). A file name not conforming to this standard naming convention will not be accepted, not be unzipped, and fail on the Host.
Compression Techniques	PKZIP will compress one or more files into a single ZIP archive. WINZIP will compress one or more files into a single ZIP archive. Conduent accepts transmission with any of the above compression techniques, as well as non-compression files.
Data Format	8 data bit, 1stop bit, no parity, full duplex.
Transmission Protocol	ZMODEM uses 128 byte to 1024-byte variable packets and a 16-bit or 32-bit Cyclical Redundancy Check (CRC). XMODEM uses 128-byte blocks and a 16-bit CRC. YMODEM uses 1024-byte blocks and a 16-bit CRC. KERMIT can be accepted if X, Y, or ZMODEM capabilities are not available with your communication software.

Teleprocessing Settings

Table 2: Teleprocessing Settings

ASCII Sending	Send line ends with line feeds (should not be set). Echo typed characters locally (should not be set). Line delay 0 milliseconds. Character delay 0 milliseconds.
ASCII Receiving	Append line feeds to incoming line ends should not be checked. Wrap lines that exceed terminal width.
Terminal Emulation	VT100 or Auto.

Transmission Procedures

Table 3: Transmission Procedures

Submitter	Host System
1. Dials Conduent Host	Answers call, negotiates a common baud rate, and sends to the Trading Partner: "Please enter your Logon=>"
2. Enters Logon Name <CR>	Receives User Name (Logon Name) and sends to the Trading Partner: "Please enter your password=>"
3. Enters Password <CR>	Receives Logon and verifies if Trading Partner is an authorized user. Sends HOST selection menu followed by a user prompt: "Please Select from the Menu Options Below=>"
4. Enters Desired Selection <CR>	#1. Electronic File Submission: Assigns and sends the transmission file name then waits for ZMODEM (by default) file transfer to be initiated by the

Submitter	Host System
	<p>Trading Partner.</p> <p>#2. View Submitter Profile</p> <p>#3. Select File Transfer Protocol: Allows you to change the protocol for the current submission only. The protocol may be changed to (k)ermit, (x)Modem, (y)Modem, or (z)Modem. Enter selection [k,x,y,z]:</p> <p>#4. Download Confirmation</p> <p>#9. Exit & Disconnect: Terminates connection</p>
<p>5. Enters "1" to send file <CR></p>	<p>Receives ZMODEM (or other designated protocol) file transfer. Upon completion, initiates file confirmation. Sends file confirmation report.</p> <p>Sends HOST selection menu followed by a user prompt=></p> <p>"Please Select from the Menu Options Below=>"</p>

Web Portal

The Web portal allows a trading partner to initiate the submission of a batch file for processing. The trading partner must be an authenticated portal user who is a provider. Only active Medicaid providers are authorized to access files via the Web. The provider accesses the Web portal via a Web browser and is prompted for login and password assigned to them during the EDI enrollment process. The provider may select files from their PC or work environment using the Browse function in conjunction with the Add and Remove functions. To transmit the selected files for processing, the trading partner must click the Submit link. All files submitted must meet the ANSI X12N 278 standard.

The Web address to access data from Conduent EDI Solutions is <https://www.dc-medicaid.com/dcwebportal/home>. Web browsers must be able to support 128-bit encryption to enter the Data Exchange area of the site. Upon reaching the site, enter a valid user ID and password. Click on the Login button to request access to the secure Data Exchange area.

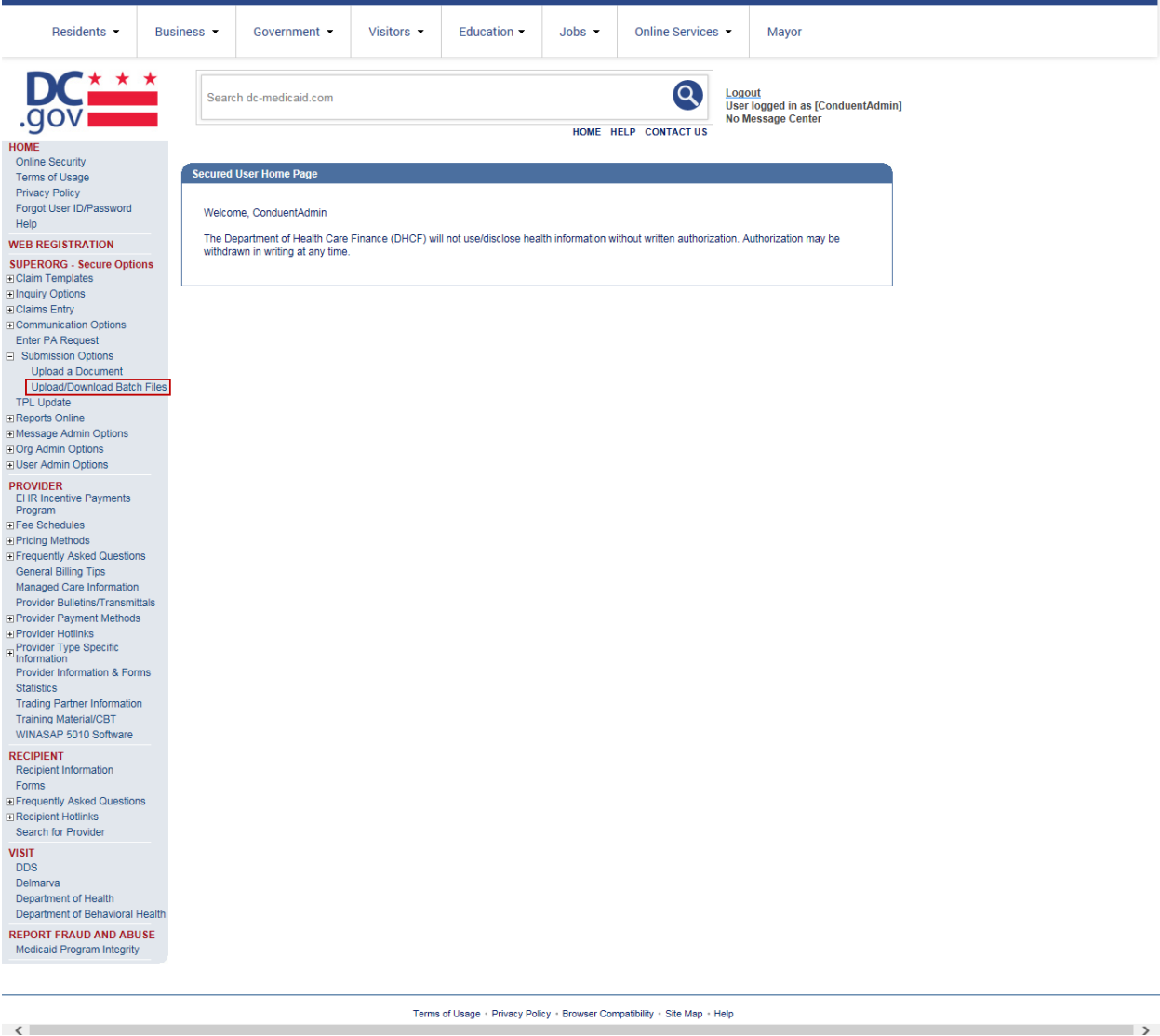
Figure 2: Home Page Image



The screenshot shows the DC Medicaid Web Portal Home Page. At the top, there is a navigation bar with dropdown menus for Residents, Business, Government, Visitors, Education, Jobs, Online Services, and Mayor. Below this is the DC.gov logo and a search bar for dc-medicaid.com. A login section includes fields for User ID and Password, a GO button, and links for HOME, HELP, and CONTACT US. A profile picture of Mayor Muriel Bowser is displayed. The main content area is divided into three columns: DC Medicaid/Alliance and Me, Latest News, and What's Hot? The DC Medicaid/Alliance and Me column includes links for What is Medicaid?, What is Alliance?, and Who is Eligible?. The Latest News column lists recent updates. The What's Hot? column features the CMS Medicaid Program Integrity Education Website. Below these columns are sections for Provider and Recipient, each with a list of links and a representative image. A sidebar on the left contains links for HOME, WEB REGISTRATION, PROVIDER, RECIPIENT, VISIT, and REPORT FRAUD AND ABUSE. The footer includes links for Terms of Usage, Privacy Policy, Browser Compatibility, Site Map, and Help.

If you enter an invalid user ID or password, an error screen will display, and entry will not be allowed. Enter access information exactly as it is specified, including case and spaces, if any. If the correct user ID and password have been entered and a failure occurs, please contact the Conduent EDI Support Unit at **1 (866) 407-2005**.


Figure 3: Upload Files Image




Select the Upload/Download Files link to send files to Conduent.

Figure 4: File Submission Image

Residents ▾Business ▾Government ▾Visitors ▾Education ▾Jobs ▾Online Services ▾Mayor





[Logout](#)
User logged in as [ConduentAdmin]
No Message Center

HOME
Online Security
Terms of Usage
Privacy Policy
Forgot User ID/Password
Help

WEB REGISTRATION
SUPERORG - Secure Options
Claim Templates
Inquiry Options
Claims Entry
Communication Options
Enter PA Request
Submission Options
Upload a Document
Upload/Download Batch Files
TPL Update
Reports Online
Message Admin Options
Org Admin Options
User Admin Options

PROVIDER
EHR Incentive Payments Program
Fee Schedules
Pricing Methods
Frequently Asked Questions
General Billing Tips
Managed Care Information
Provider Bulletins/Transmittals
Provider Payment Methods
Provider Hotlinks
Provider Type Specific Information
Provider Information & Forms
Statistics
Trading Partner Information
Training Material/CBT
WINASAP 5010 Software

RECIPIENT
Recipient Information
Forms
Frequently Asked Questions
Recipient Hotlinks
Search for Provider

VISIT
DDS
Delmarva
Department of Health
Department of Behavioral Health

REPORT FRAUD AND ABUSE
Medicaid Program Integrity

HOMEHELPCONTACT US

Upload Download Batch Files

Connecting to EDI Gateway may take several minutes.

EDI Submitter ID:

EDI Password

SubmitReset

Terms of Usage · Privacy Policy · Browser Compatibility · Site Map · Help

Click on the Browse button and select the file for upload. To submit, click on the Upload button.

Figure 5: Confirmation Screen Image

Residents ▾

Business ▾

Government ▾


Visitors ▾


Education ▾

Jobs ▾

Online Services ▾

Mayor





[Logout](#)
 User logged in as [ConduentAdmin]
 No Message Center

[HOME](#)
[HELP](#)
[CONTACT US](#)

HOME
[Online Security](#)
[Terms of Usage](#)
[Privacy Policy](#)
[Forgot User ID/Password](#)
[Help](#)

WEB REGISTRATION
SUPERORG - Secure Options
[Claim Templates](#)
[Inquiry Options](#)
[Claims Entry](#)
[Communication Options](#)
[Enter PA Request](#)
[Submission Options](#)
[Upload a Document](#)
Upload/Download Batch Files
[TPL Update](#)
[Reports Online](#)
[Message Admin Options](#)
[Org Admin Options](#)
[User Admin Options](#)

PROVIDER
[EHR Incentive Payments Program](#)
[Fee Schedules](#)
[Pricing Methods](#)
[Frequently Asked Questions](#)
[General Billing Tips](#)
[Managed Care Information](#)
[Provider Bulletins/Transmittals](#)
[Provider Payment Methods](#)
[Provider Hotlinks](#)
[Provider Type Specific Information](#)
[Provider Information & Forms](#)
[Statistics](#)
[Trading Partner Information](#)
[Training Material/CBT](#)
[WINASAP 5010 Software](#)

RECIPIENT
[Recipient Information](#)
[Forms](#)
[Frequently Asked Questions](#)
[Recipient Hotlinks](#)
[Search for Provider](#)

VISIT
[DDS](#)
[Delmarva](#)
[Department of Health](#)
[Department of Behavioral Health](#)

REPORT FRAUD AND ABUSE
[Medicaid Program Integrity](#)

Upload/Download Batch Files

Enter the path to the file you wish to Upload or Click **Browse** to select a file from your Hard Drive. Click **Upload** when the correct file has been entered

Please note that you may only upload X12 formatted EDI files. Do not submit Zipped files or Non-X12 EDI files.

File path:

File Responses

Responses will be posted for 60 days at which time they will be deleted from the Web Portal.

*List reflects downloadable files from EDI Gateway.

Received	File Name	File Size	Files
10/15/2006	MS_061015_18534_262148_12336787_835.001	819,773 bytes	<input type="button" value="Download"/>
10/17/2006	MS_061017_57725_815243_20040_835.001	84,215 bytes	<input type="button" value="Download"/>

[Terms of Usage](#)
[Privacy Policy](#)
[Browser Compatibility](#)
[Site Map](#)
[Help](#)

This screen displays a return message indicating the file was successfully uploaded.

MoveIt DMZ

MOVEit DMZ is appropriate for submitters of large transaction files. MOVEit DMZ is a software product that transports data via secure FTP across the Internet.

There are two methods for using MOVEit DMZ:

1. Uploading files through a secure website <https://moveit.pdc.conduent.com>.
2. Sending and receiving files via Secure FTP client. (MOVEit Freely is a free Secure FTP client available for download at <https://www.ipswitch.com/moveit>).

MOVEit-Compatible FTP Applications

Table 4: MOVEit-Compatible FTP Applications (Submission)

MOVEit-Compatible FTP Applications	
HTTPS (HTTP over SSL) Clients	SSH2 SFTP and SCP2 Clients
cURL (downloads only) <ul style="list-style-type: none"> AIX; AmigaOS; BeOS; DOS; DragonFly BSD; FreeBSD; HP-UX; Linux; NetBSD; NetWare; OpenBSD; OS/2; OS X; QNX; RISC OS; Solaris; SunOS; Tru64 UNIX; UNIXware; VMS; Windows Internet Explorer Web Browser <ul style="list-style-type: none"> Macintosh, Windows Firefox Web Browser <ul style="list-style-type: none"> any supported OS MOVEit Central <ul style="list-style-type: none"> Windows Vista Business Ed., 2003, XP Professional, 2000 Server MOVEit Central API Java Class <ul style="list-style-type: none"> Windows Vista Business Ed., 2003, XP Professional, 2000 Server MOVEit Central API Windows COM Component <ul style="list-style-type: none"> Windows Vista Business Ed., 2003, XP Professional, 2000 Server MOVEit DMZ API Java Class <ul style="list-style-type: none"> any OS with Java v.1.4 or higher MOVEit DMZ API Windows COM Component <ul style="list-style-type: none"> Windows Vista Business Ed., 2003, XP, 2000, NT 4.0 MOVEit Wizard ActiveX Plugin <ul style="list-style-type: none"> Internet Explorer Windows MOVEit Wizard Java Plugin <ul style="list-style-type: none"> Firefox Linux and Windows; Mozilla Linux and Windows; Netscape Linux and Windows; Opera Linux and Windows; Safari OS X MOVEit Xfer Java <ul style="list-style-type: none"> Any OS with Java v.1.4 or higher MOVEit Xfer Windows <ul style="list-style-type: none"> Windows Vista Business Ed., 2003, XP, 2000, ME, 98, NT Mozilla Web Browser <ul style="list-style-type: none"> any supported OS Netscape Navigator Web Browser <ul style="list-style-type: none"> Linux, Macintosh, Windows Opera Web Browser <ul style="list-style-type: none"> any supported OS Safari Web Browser <ul style="list-style-type: none"> OS X 	Cyberduck <ul style="list-style-type: none"> OS X v.10.3 or higher Cyclone Commerce Interchange <ul style="list-style-type: none"> Solaris FileZilla <ul style="list-style-type: none"> Windows F-Secure SSH (including SCP2) <ul style="list-style-type: none"> Solaris, UNIX, Windows Fugu <ul style="list-style-type: none"> OS X v.10.3 or higher IBM Ported Tools (OpenSSH) <ul style="list-style-type: none"> z/OS Ipswitch WS_FTP Pro <ul style="list-style-type: none"> Windows J2SSH <ul style="list-style-type: none"> Java MacSSH <ul style="list-style-type: none"> OS X v.10.3 or higher Magnetk sftpdrive <ul style="list-style-type: none"> Windows MOVEit Central <ul style="list-style-type: none"> Windows Vista Business Ed., 2003, XP Professional, 2000 Server NET::SFTP (uses Net::SSH::Perl) <ul style="list-style-type: none"> Linux OpenSSH for sftp <ul style="list-style-type: none"> MVS; OS X v.10.3 or higher; Solaris; UNIX; Windows; z/OS v.1.4 or higher PuTTY PSCP and PSFTP <ul style="list-style-type: none"> Windows, Windows NT for Alpha Rbrowser <ul style="list-style-type: none"> OS X v.10.3 or higher SouthRiver Technologies WebDrive <ul style="list-style-type: none"> Windows SSH FileSystem (SSHFS) <ul style="list-style-type: none"> Unix (requires OpenSSH and FUSE) SSH Secure Shell FTP <ul style="list-style-type: none"> Windows SSH Tectia Client <ul style="list-style-type: none"> AIX, HP-UX, Linux, Solaris, Windows SSH Tectia Connector <ul style="list-style-type: none"> Windows Stairways Interarchy <ul style="list-style-type: none"> OS X Transmit <ul style="list-style-type: none"> OS X v.10.3 or higher WinSCP (in SFTP mode) <ul style="list-style-type: none"> Windows
AS2 and AS3 (SSL) Clients Clients that are AS2 or AS3 certified by Drummond will be compatible with MOVEit DMZ, including: MOVEit Central <ul style="list-style-type: none"> Windows Vista Business Ed., 2003, XP Professional, 2000 Server 	

MOVEit-Compatible FTP Applications	
FTPS (FTP over SSL) Clients	FTPS (FTP over SSL) Clients, Cont.
bTrade TDAccess <ul style="list-style-type: none"> AIX, AS/400, HP-UX, Linux, MVS, Solaris, Windows C-Kermit FTP <ul style="list-style-type: none"> AIX, QNX, UNIX, VMS Cleo LexiCom <ul style="list-style-type: none"> AS/400, Linux, UNIX, Windows cURL <ul style="list-style-type: none"> AIX; AmigaOS; BeOS; DOS; DragonFly BSD; FreeBSD; HP-UX; Linux; NetBSD; NetWare; OpenBSD; OS/2; OS X; QNX; RISC OS; Solaris; SunOS; Tru64 UNIX; UNIXware; VMS; Windows FileZilla <ul style="list-style-type: none"> Windows GlobalSCAPE CuteFTP Pro <ul style="list-style-type: none"> Windows GLUB Secure FTP <ul style="list-style-type: none"> Java IBM z/OS Secure Sockets FTP <ul style="list-style-type: none"> z/OS IniCom FlashFXP (GUI v.3.0 or higher) <ul style="list-style-type: none"> Windows Ipswitch WS_FTP Pro (GUI v.7.0 or higher) <ul style="list-style-type: none"> Windows LFTP <ul style="list-style-type: none"> AIX, MVS, Solaris, UNIX MOVEit Buddy <ul style="list-style-type: none"> Windows Vista Business Ed., 2003, XP, 2000, ME, 98, NT 	MOVEit Central <ul style="list-style-type: none"> Windows Vista Business Ed., 2003, XP Professional, 2000 Server MOVEit Freely <ul style="list-style-type: none"> Windows Vista Business Ed., 2003, XP, 2000, ME, 98, NT Netkit <ul style="list-style-type: none"> Linux, Solaris, UNIX Rhino Voyager FTP <ul style="list-style-type: none"> Windows Seagull Secure FTP Pro <ul style="list-style-type: none"> Windows SmartFTP <ul style="list-style-type: none"> Windows SouthRiver Technologies WebDrive <ul style="list-style-type: none"> Windows Stairways Interarchy <ul style="list-style-type: none"> OS X Sterling Commerce Connect:Direct Enterprise Command Line Client <ul style="list-style-type: none"> UNIX, Windows Surge SSLFTP <ul style="list-style-type: none"> FreeBSD; Linux; Macintosh; Solaris; Windows TrailBlazer ZMOD <ul style="list-style-type: none"> OS/400 Tumbleweed SecureTransport Clients <ul style="list-style-type: none"> UNIX, Windows /n software IP*Works SSL <ul style="list-style-type: none"> Windows

Data Retrieval

This section describes the available data delivery modes from Conduent EDI Solutions. The ANSI ASC X12N 276 Health Care Claim Status Request is an inbound (to Conduent EDI) transaction. The response to the 276 transaction is the ANSI ASC X12N 277 Health Care Claim Status Response. These transactions are available on the Web Portal and through other modes of transmission discussed in the following sections.

Providers will have an option to select an appropriate transmission mode for delivery. Providers may also opt for two different modes of receipt and delivery. This means that the provider may submit transactions in one transmission mode and receive the return transaction via an alternate mode. Please note that some modes of transmission have additional costs that are the responsibility of the external Trading Partner.

Error Reports

The TA1 and 999 transactions will be posted to the Web Portal or sent via another agreed upon transmission mode.

The functions of the acceptance/rejection reports (TA1, 999) are discussed in Chapter 8, Acknowledgements and/or Reports.

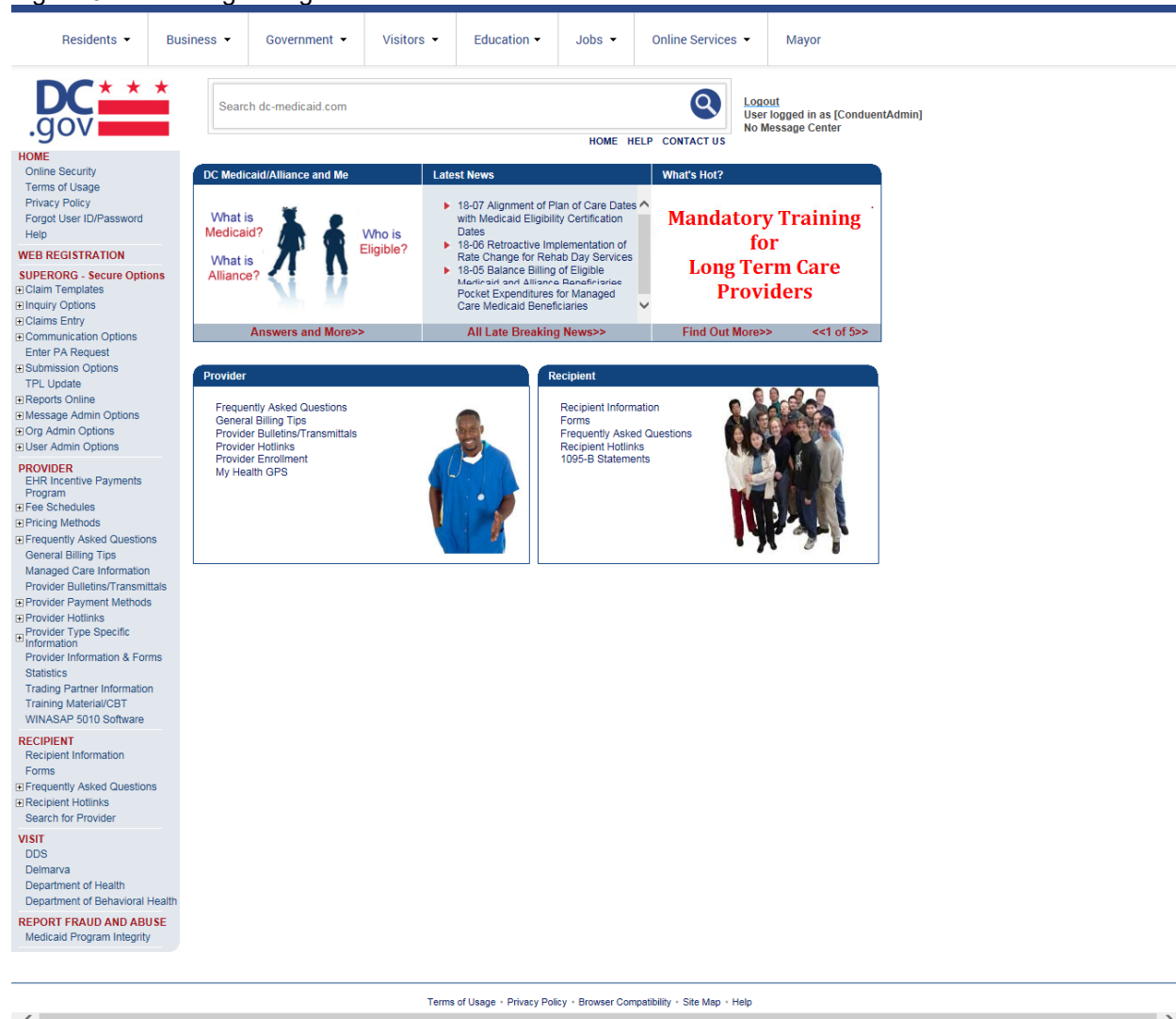
Web Portal

The Web Portal allows all trading partners to retrieve data via the Internet 24 hours a day, seven days a week. Each individual provider has the option of retrieving the transaction responses and reports themselves and/or of allowing billing agents and clearinghouses the option of retrieval on their behalf. The trading partner will access the Web Portal system using the User ID and Password provided during the enrollment process.

Site Access

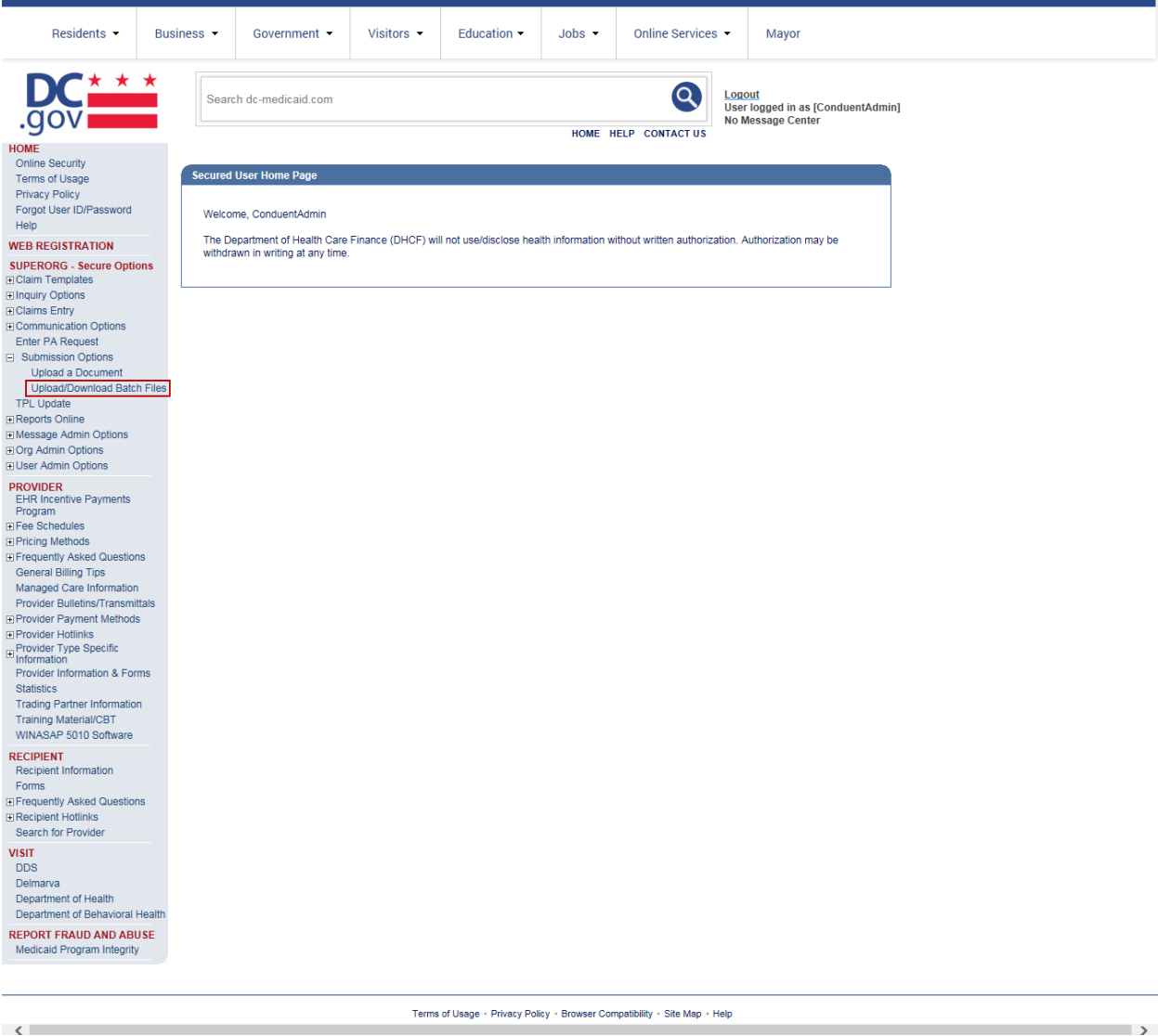
The web address to access data from Conduent EDI Solutions is <https://www.dc-medicaid.com/dcwebportal/home>. Click on the Login button to request access to the secure Data Exchange area.

Figure 6: Home Page Image



If you enter an invalid user ID or password, an error screen will display, and entry will not be allowed. Enter access information exactly as it is specified, including case and spaces, if any. If the correct user ID and password have been entered and a failure occurs, please contact the Conduent EDI Support Unit at **1 (866) 407-2005**.

Figure 7: Download Files Image



Select the Upload/Download Files Link to retrieve files from the Conduent SHCH.

Figure 8: Retrieve Files Image

Residents ▾

Business ▾

Government ▾


Visitors ▾

Education ▾


Jobs ▾

Online Services ▾

Mayor



Search dc-medicaid.com



Logout

User logged in as [ConduentAdmin]

No Message Center

HOME HELP CONTACT US

HOME

Online Security

Terms of Usage

Privacy Policy

Forgot User ID/Password

Help

WEB REGISTRATION

SUPERORG - Secure Options

Claim Templates

Inquiry Options

Claims Entry

Communication Options

Enter PA Request

Submission Options

Upload a Document

Upload/Download Batch Files

TPL Update

Reports Online

Message Admin Options

Org Admin Options

User Admin Options

PROVIDER

EHR Incentive Payments Program

Fee Schedules

Pricing Methods

Frequently Asked Questions

General Billing Tips

Managed Care Information

Provider Bulletins/Transmittals

Provider Payment Methods

Provider Hotlinks

Provider Type Specific Information

Provider Information & Forms

Statistics

Trading Partner Information

Training Material/CBT

WINASAP 5010 Software

RECIPIENT

Recipient Information

Forms

Frequently Asked Questions

Recipient Hotlinks

Search for Provider

VISIT

DDS

Delmarva

Department of Health

Department of Behavioral Health

REPORT FRAUD AND ABUSE

Medicaid Program Integrity

Upload/Download Batch Files

Enter the path to the file you wish to Upload or Click Browse to select a file from your Hard Drive. Click Upload when the correct file has been entered

Please note that you may only upload X12 formatted EDI files. Do not submit Zipped files or Non-X12 EDI files.

File path:

Browse...

Upload

File Responses

Responses will be posted for 60 days at which time they will be deleted from the Web Portal.

*List reflects downloadable files from EDI Gateway.

Received	File Name	File Size	Files
10/15/2006	MS_061015_18534_262148_12336787_835.001	819,773 bytes	Download
10/17/2006	MS_061017_57725_815243_20040_835.001	84,215 bytes	Download

Terms of Usage · Privacy Policy · Browser Compatibility · Site Map · Help

Click on the download button of the file you would like to view. This will open the file in Adobe Acrobat.

MoveIt DMZ

MOVEit DMZ is appropriate for submitters of large transaction files. MOVEit DMZ is a software product that transports data via secure FTP across the Internet.

There are two methods for using MOVEit DMZ:

1. Uploading files through a secure website: <https://moveit.pdc.conduent.com/>.
2. Sending and receiving files via Secure FTP client. (MOVEit Freely is a free Secure FTP client available for download at <https://www.ipswitch.com/moveit>).

MOVEit-Compatible FTP Applications

Table 5: MOVEit-Compatible FTP Applications (Retrieval)

MOVEit-Compatible FTP Applications	
HTTPS (HTTP over SSL) Clients	SSH2 SFTP and SCP2 Clients
cURL (downloads only) <ul style="list-style-type: none"> AIX; AmigaOS; BeOS; DOS; DragonFly BSD; FreeBSD; HP-UX; Linux; NetBSD; NetWare; OpenBSD; OS/2; OS X; QNX; RISC OS; Solaris; SunOS; Tru64 UNIX; UNIXware; VMS; Windows Internet Explorer Web Browser <ul style="list-style-type: none"> Macintosh, Windows Firefox Web Browser <ul style="list-style-type: none"> any supported OS MOVEit Central <ul style="list-style-type: none"> Windows Vista Business Ed., 2003, XP Professional, 2000 Server MOVEit Central API Java Class <ul style="list-style-type: none"> Windows Vista Business Ed., 2003, XP Professional, 2000 Server MOVEit Central API Windows COM Component <ul style="list-style-type: none"> Windows Vista Business Ed., 2003, XP Professional, 2000 Server MOVEit DMZ API Java Class <ul style="list-style-type: none"> any OS with Java v.1.4 or higher MOVEit DMZ API Windows COM Component <ul style="list-style-type: none"> Windows Vista Business Ed., 2003, XP, 2000, NT 4.0 MOVEit Wizard ActiveX Plugin <ul style="list-style-type: none"> Internet Explorer Windows MOVEit Wizard Java Plugin <ul style="list-style-type: none"> Firefox Linux and Windows; Mozilla Linux and Windows; Netscape Linux and Windows; Opera Linux and Windows; Safari OS X MOVEit Xfer Java <ul style="list-style-type: none"> Any OS with Java v.1.4 or higher MOVEit Xfer Windows <ul style="list-style-type: none"> Windows Vista Business Ed., 2003, XP, 2000, ME, 98, NT Mozilla Web Browser <ul style="list-style-type: none"> any supported OS Netscape Navigator Web Browser <ul style="list-style-type: none"> Linux, Macintosh, Windows Opera Web Browser <ul style="list-style-type: none"> any supported OS Safari Web Browser <ul style="list-style-type: none"> OS X 	Cyberduck <ul style="list-style-type: none"> OS X v.10.3 or higher Cyclone Commerce Interchange <ul style="list-style-type: none"> Solaris FileZilla <ul style="list-style-type: none"> Windows F-Secure SSH (including SCP2) <ul style="list-style-type: none"> Solaris, UNIX, Windows Fugu <ul style="list-style-type: none"> OS X v.10.3 or higher IBM Ported Tools (OpenSSH) <ul style="list-style-type: none"> z/OS Ipswitch WS_FTP Pro <ul style="list-style-type: none"> Windows J2SSH <ul style="list-style-type: none"> Java MacSSH <ul style="list-style-type: none"> OS X v.10.3 or higher Magnetk sftpdrive <ul style="list-style-type: none"> Windows MOVEit Central <ul style="list-style-type: none"> Windows Vista Business Ed., 2003, XP Professional, 2000 Server NET::SFTP (uses Net::SSH::Perl) <ul style="list-style-type: none"> Linux OpenSSH for sftp <ul style="list-style-type: none"> MVS; OS X v.10.3 or higher; Solaris; UNIX; Windows; z/OS v.1.4 or higher PuTTY PSCP and PSFTP <ul style="list-style-type: none"> Windows, Windows NT for Alpha Rbrowser <ul style="list-style-type: none"> OS X v.10.3 or higher SouthRiver Technologies WebDrive <ul style="list-style-type: none"> Windows SSH FileSystem (SSHFS) <ul style="list-style-type: none"> Unix (requires OpenSSH and FUSE) SSH Secure Shell FTP <ul style="list-style-type: none"> Windows SSH Tectia Client <ul style="list-style-type: none"> AIX, HP-UX, Linux, Solaris, Windows SSH Tectia Connector <ul style="list-style-type: none"> Windows Stairways Interarchy <ul style="list-style-type: none"> OS X Transmit <ul style="list-style-type: none"> OS X v.10.3 or higher WinSCP (in SFTP mode) <ul style="list-style-type: none"> Windows
AS2 and AS3 (SSL) Clients Clients that are AS2 or AS3 certified by Drummond will be compatible with MOVEit DMZ, including: MOVEit Central <ul style="list-style-type: none"> Windows Vista Business Ed., 2003, XP Professional, 2000 Server 	

MOVEit-Compatible FTP Applications	
FTPS (FTP over SSL) Clients	FTPS (FTP over SSL) Clients, Cont.
bTrade TDAccess <ul style="list-style-type: none"> AIX, AS/400, HP-UX, Linux, MVS, Solaris, Windows C-Kermit FTP <ul style="list-style-type: none"> AIX, QNX, UNIX, VMS Cleo LexiCom <ul style="list-style-type: none"> AS/400, Linux, UNIX, Windows cURL <ul style="list-style-type: none"> AIX; AmigaOS; BeOS; DOS; DragonFly BSD; FreeBSD; HP-UX; Linux; NetBSD; NetWare; OpenBSD; OS/2; OS X; QNX; RISC OS; Solaris; SunOS; Tru64 UNIX; UNIXware; VMS; Windows FileZilla <ul style="list-style-type: none"> Windows GlobalSCAPE CuteFTP Pro <ul style="list-style-type: none"> Windows GLUB Secure FTP <ul style="list-style-type: none"> Java IBM z/OS Secure Sockets FTP <ul style="list-style-type: none"> z/OS IniCom FlashFXP (GUI v.3.0 or higher) <ul style="list-style-type: none"> Windows Ipswitch WS_FTP Pro (GUI v.7.0 or higher) <ul style="list-style-type: none"> Windows LFTP <ul style="list-style-type: none"> AIX, MVS, Solaris, UNIX MOVEit Buddy <ul style="list-style-type: none"> Windows Vista Business Ed., 2003, XP, 2000, ME, 98, NT 	MOVEit Central <ul style="list-style-type: none"> Windows Vista Business Ed., 2003, XP Professional, 2000 Server MOVEit Freely <ul style="list-style-type: none"> Windows Vista Business Ed., 2003, XP, 2000, ME, 98, NT Netkit <ul style="list-style-type: none"> Linux, Solaris, UNIX Rhino Voyager FTP <ul style="list-style-type: none"> Windows Seagull Secure FTP Pro <ul style="list-style-type: none"> Windows SmartFTP <ul style="list-style-type: none"> Windows SouthRiver Technologies WebDrive <ul style="list-style-type: none"> Windows Stairways Interarchy <ul style="list-style-type: none"> OS X Sterling Commerce Connect:Direct Enterprise Command Line Client <ul style="list-style-type: none"> UNIX, Windows Surge SSLFTP <ul style="list-style-type: none"> FreeBSD; Linux; Macintosh; Solaris; Windows TrailBlazer ZMOD <ul style="list-style-type: none"> OS/400 Tumbleweed SecureTransport Clients <ul style="list-style-type: none"> UNIX, Windows /n software IP*Works SSL <ul style="list-style-type: none"> Windows

Passwords

Trading partners are assigned a “Logon Name” and “Logon User ID” during the enrollment process with DC Medicaid.

Password General Standards

- Login User IDs (passwords) are nine characters

5 Contact Information

EDI Customer Service/Technical Assistance

The Conduent EDI Support Unit assists users with questions about electronic submission. The Conduent EDI Support Unit is available to all District of Columbia Medicaid Providers Monday through Friday from 8:00 a.m. to 5:00 p.m. EST at **1 (866) 407-2005**. The Conduent EDI Support Unit:

- Provides information on available services;
- Enrolls users for electronic submission;
- Verifies receipt of electronic transmissions; and
- Provides technical assistance to users who are experiencing transmission difficulties.

Transmission Telephone Number

Conduent EDI Solutions provides availability for transmission 24 hours a day, 7 days a week. There are no restrictions on the number or frequency of transmissions. The transmission telephone number is **1 (800) 334-2832** or **1 (800) 334-4650**.

Tracking Transmission/Production Problems

Please have the following information available when calling the Conduent EDI Support Unit regarding transmission and production issues.

Trading Partner ID: Your Trading Partner ID is our key to accessing your Trading Partner information. Please have this number available each time you contact the Conduent EDI Support Unit.

Logon Name and Logon User ID: These allow asynchronous Trading Partners access to the host system for your submission. The Conduent EDI Support Unit uses this information to reference your submitted data.

Provider Service Number

Conduent EDI is the clearinghouse that will manage the receipt and delivery of the DC Medicaid files. EDI will not be able to answer billing questions or provide an explanation of claim denials.

Trading partners may contact **1 (866) 407-2005, Option 3**, to receive assistance with provider service-related questions.

Applicable Websites

<http://edisolutionsmmis.portal.conduent.com/gcro/>

6 Control Segments/Envelopes

ISA-IEA

Conduent EDI Solutions will read the Interchange Control Segments to validate the Interchange Envelope of each ASC X12 file received for processing. If the InterchangeEnvelope is invalid, the trading partner will receive a TA1 Interchange Acknowledgement. In the event a TA1 is generated, the TA1 will be delivered to the Trading Partner Mailbox. The ISA table provides sender and receiver codes, authorization and delimiter information.

Table 6: ISA-IEA Segment

TR3 Page	Loop	Segment	Data Element	Industry Name	Comments
Interchange Control Header (ISA)					
C.3	Envelope	ISA	01	Authorization Information Qualifier	Refer to the X12 TR3 Guide
C.4	Envelope	ISA	06	Interchange Sender ID	Trading Partner ID assigned by DC Medicaid/Conduent EDI
C.5	Envelope	ISA	08	Interchange Receiver ID	100000
C.6	Envelope	ISA	16	Component Element Separator	Refer to the X12 TR3 Guide

GS-GE

Conduent EDI Solutions permits Trading Partners to submit single or multiple functional groups within an X12 file. If the X12 file contains multiple functional groups, Conduent EDI will split a file containing multiple functional groups in several files for processing. As a result, the Trading Partner will receive multiple X12C 999 Implementation Acknowledgments.

Table 7: GS-GE Segment

TR3 Page	Loop	Segment	Data Element	Industry Name	Comments
Functional Group Header (GS)					
C.7	Envelope	GS	02	Application Sender's Code	Trading Partner ID assigned by DC Medicaid/Conduent EDI
C.7	Envelope	GS	03	Application Receiver's Code	77033

ST-SE

Conduent EDI Solutions will require a unique Transaction Set Control Number in the ST02. The ST02 value should match the SE02 value. Should a file contain multiple ST to SE Transaction Sets, each transaction set control number may not be duplicated within the same interchange (ISA to IEA).

Table 8: ST-SE Segment

TR3 Page	Loop	Segment	Data Element	Industry Name	Comments
Transaction Set Header (ST to SE)					
70	Functional Group	ST	02	Transaction Set Control Number	Refer to the X12 TR3Guide
Transaction Set Trailer (SE)					
499	Functional Group	SE	02	Transaction Set Control Number	Refer to the X12 TR3Guide

7 Payer Specific Business Rules and Limitations

To promote efficient, accurate electronic transaction processing, please note:

- Each user is assigned a six-digit Trading Partner ID.
- If you are a current submitter you will continue to use your current five-digit submitter ID.
- Login User IDs (passwords) are nine characters.
- All dates are in the CCYYMMDD format.
- All date/times are in the CCYYMMDDHHMM format.
- The same phone number will be used for transmitting test and production data.
- District of Columbia Medicaid Recipient IDs are eight digits long.
- The Receiver ID and Payer ID for District of Columbia Medicaid is **77033**. Transmissions without this value in the appropriate fields will not be processed.

Your Trading Partner Agreement determines where reports and response will be delivered.

8 Acknowledgements and/or Reports

HIPAA not only gave the healthcare community the ability to standardize transactions, but also the ability to standardize front-end edits and the acceptance/rejection reports associated with the edits. The acceptance/rejection reports pertain to precision within EDI transaction format syntax and transaction Consolidated Guide compliance. When a report is generated, the type of report returned is dependent on the edit level that is invalid.

A transaction contains three levels where edits occur. If the transaction fails an edit, the edit level in which the error occurs designates rejection of an entire batch or a single transaction. The three levels are:

- Interchange Level Errors
- Functional Group Level Results
- Transaction Set Level Syntax Results

In the description below, the three levels and their affiliated acceptance/rejection reports are discussed.

Report Inventory

Interchange Level Errors and TA1 Rejection Report

This edit is enforced by interchange level problems. It checks the **ISA**, **GS**, **GE** and **IEA** level segments and the data content within these segments, which consists of the header and footer batch information. Any X12 syntax error that occurs at this level will result in the entire transaction being rejected. These rejections are reported on a TA1.

TA1-Interchange Acknowledgement

A TA1 is an ANSI ASC X12N Interchange Acknowledgement segment used to report receipt of individual interchange envelopes. An interchange envelope contains the sender, receiver, and data type information within the header. The TA1 reports the syntactical analysis of the interchange header and trailer. If invalid (e.g. the data is corrupt or the trading partner relationship does not exist within the Conduent system) the interchange will reject and a TA1, along with the data, will be forwarded to the Conduent EDI Solutions call center for referencing purposes.

EXAMPLE: The transaction was built with incorrect sender information or incorrect total of groups at the end of the transaction:

```

ISA    (contains sender information)
GS
ST      Detailed Segment Information-1
SE
ST      Detailed Segment Information-2
SE
ST      Detailed Segment Information-3
SE
GE
IEA    (contains the total number of all functional groups within the batch).
```

For an additional example of this report, please see the ANSI ASC X12 276/277 Consolidated Guide.

Transaction Set Level Syntax Results and 999 Rejection Report

This edit is enforced by transaction set level syntax problems for all transactions within each functional group. These edits check the ST and SE level segments and the data content within these segments. These segments consist of the entire detailed information within a transaction. Any X12 syntax error that occurs at this level will result in the entire transaction being rejected. However, if the functional group consists of additional transactions without errors, these will be processed. The rejections are reported on the ANSI ASC X12N 999.

ANSI ASC X12N 999-Functional Acknowledgement

Conduent SHCH validates submission of ANSI ASC X12N format(s). An ANSI ASC X12N 999, or Functional Acknowledgement, is generated when an EDI file, e.g., an ANSI ASC X12N file that has passed the header and trailer check, passes through the clearinghouse. The 999 file contains **ACCEPT** or **REJECT** information; if the file contained syntactical errors, the segment(s) and element(s) where the error(s) occurred will be reported. For an example of this report, please see the ANSI ASC X12N 276/277 Consolidated Guide. The Trading Partner Agreement between Conduent EDI Solutions and the Trading Partners requires this method of acknowledgement.

EXAMPLE: The batch was built with incorrect segment data:

```
ISA
GS
ST    Detailed Segment Information-1
SE    (contains detailed information within a transaction)
ST    Detailed Segment Information-2
SE    (contains detailed information within a transaction)
ST    Detailed Segment Information-3
SE    (contains detailed information within a transaction)
GE
IEA
```


9 Trading Partner Agreements

Conduent EDI Solutions requires trading partner enrollment, which includes a trading partner agreement, for testing and submission of X12N 276 transactions through our processing gateway. Your trading partner agreement also determines where reports and responses will be delivered.

Trading Partners

An EDI Trading Partner is defined as any payer customer (provider, billing service, software vendor, employer group, financial institution, etc.) that transmits to, or receives electronic data from the payer.

10 Transaction-Specific Information (Version 5010)

Data Clarifications

This companion guide for the ANSI ASC X12N 276/277 Benefit Eligibility Request/Response transaction has been created for use in conjunction with the combined Consolidated Guide. It should not be considered a replacement for the Consolidated Guide, but rather used as an additional source of information.

This section contains data clarifications. The clarifications include:

- Identifiers to use when a national standard has not been adopted (and);
- Parameters in the implementation guide that provides options.

The following are access methods supported by Conduent:

- Access by Medicaid Recipient ID
- Access by Provider ID
- Access by Transaction Control Number (TCN)

Many of the data elements included in the Companion Guides are business requirements and are not necessarily required per the ANSI ASC standard. Inclusion of a “Business-Required” data field, as defined by this Companion Guide, may aid in the delivery of a positive response.

In order to expedite claims processing, please limit the number of claims submitted to 5,000 per transmission.

276 Claim Status Request

Table 9: 276 Claim Status Request

Loop	Segment	Data Element	Comments
Interchange Control Header (ISA)			
Envelope	ISA	01	Please use '00' – No Authorization Present
Envelope	ISA	02	Please fill with spaces.
Envelope	ISA	03	Please use '00' – No security Information Present'.
Envelope	ISA	04	Please fill with spaces.
Envelope	ISA	05	Please use 'ZZ' – Mutually Defined.
Envelope	ISA	06	Value is the trading partner ID provided during enrollment process. Please make sure this ID is left justified with trailing spaces.
Envelope	ISA	07	Please use 'ZZ' – Mutually Defined.
Envelope	ISA	08	This is the Interchange Receiver ID. Please use 100000. Please make sure this element is left justified with trailing spaces.
Functional Group Header (GS)			
Envelope	GS	02	Value is the trading partner ID provided during enrollment process. Please make sure this ID is left justified with trailing spaces.

Table 9: 276 Claim Status Request

Loop	Segment	Data Element	Comments
Envelope	GS	03	Please use the District of Columbia's Receiver Code 77033 .
Information Source Name (Loop 2100A)			
2100A	NM1	03	Name Last or Organization Name ' DC Medicaid '
2100A	NM1	09	Identification Code ' 77033 '
Information Receiver Detail (Loop 2100B)			
2100B	NM1	09	Value is the trading partner ID provided during enrollment process. Please make sure this ID is left justified with trailing spaces.
Subscriber Detail (Loop 2100D)			
2200D	AMT		DC Required Segment
	DTP		DC Required Segment
Subscriber Detail (Loop 2210D)			
2210D	SVC		Note: DC MMIS is supporting claim level status inquiry. Any inquiry made at service level will return status of the entire claim.

277 Claim Status Response

Table 10: 277 Claim Status Response

Loop	Segment	Data Element	Comments
Interchange Control Header (ISA)			
Envelope	ISA	01	Value is ' 00 '
Envelope	ISA	02	Value is 10 spaces
Envelope	ISA	03	Value is ' 00 '
Envelope	ISA	04	Value is 10 spaces
Envelope	ISA	05	Value is ' ZZ '
Envelope	ISA	06	Value is "100000" with trailing spaces
Envelope	ISA	07	Value is ' ZZ '
Envelope	ISA	08	Value is the trading partner ID provided during the enrollment process.
Functional Group Header (GS)			
Envelope	GS	02	Value is "77033"
Envelope	GS	03	Value is the trading partner ID provided during the enrollment process.
Information Source Name (Loop 2100A)			
2100A	NM1	03	Value is ' DC Medicaid '
2100A	NM1	09	Identification Code ' 77033 '
2100A	PER	04	Value is "8667529233"

Table 10: 277 Claim Status Response

Loop	Segment	Data Element	Comments
Information Receiver Detail (Loop 2100B)			
2100B	NM1	09	Value is the trading partner ID provided during enrollment process.
Service Provider Detail (Loop 2100D)			
2100D	NM1	09	Value is the DC Medicaid Recipient ID.
Service Provider Detail (Loop 2100D)			
2200D	STC	10	DC does not support a second claim status
	STC	11	DC does not support a second claim status

*Please note the page numbers listed below in each of the tables represent the corresponding page number in the ANSI ASC X12N Consolidated Guide for this transaction. Please refer to the Consolidated Guide for any questions concerning standard data requirements for this transaction.

11 Appendices

Implementation Checklist

Conduent EDI offers a high-level onboarding checklist on request.

Business Scenarios

Please contact the [EDI Solutions Helpdesk](#) to discuss your specific business needs.

Transmission Examples

Please contact the [EDI Solutions Helpdesk](#) for transmission examples beyond the samples already provided in this guide.

Frequently Asked Questions

Frequently asked questions are posted on the Conduent EDI GCRO website [here](#). Also, your Conduent EDI Business Analyst(s) have EDI and X12 expertise in order to field all related inquiries. Please direct your questions to [EDI Solutions Helpdesk](#).

Change Summary

Companion Guide Documentation Change Control

Documentation change control is maintained in this document using the Change Control Table shown below. All changes made to this companion guide after the creation dates are noted along with the author, date, and reason for the change.

Table 11: Change Control Table

Author of Change	Page	Change	Reason	Date
Misty Provo	All	1.0	Creation of document	February 19, 2020
Heather Fowler	All	2.0	Updated URLs, branding, and format/content order to align with the CAQH CORE Master Companion Guide Template and Conduent standard	January 18, 2024